

IQUILA

SOFTWARE DEFINED NETWORKS

iQuila Enterprise Server Quick Start Guide

IQ22057r3

This Document Applies to:

iQuila Enterprise V4.35

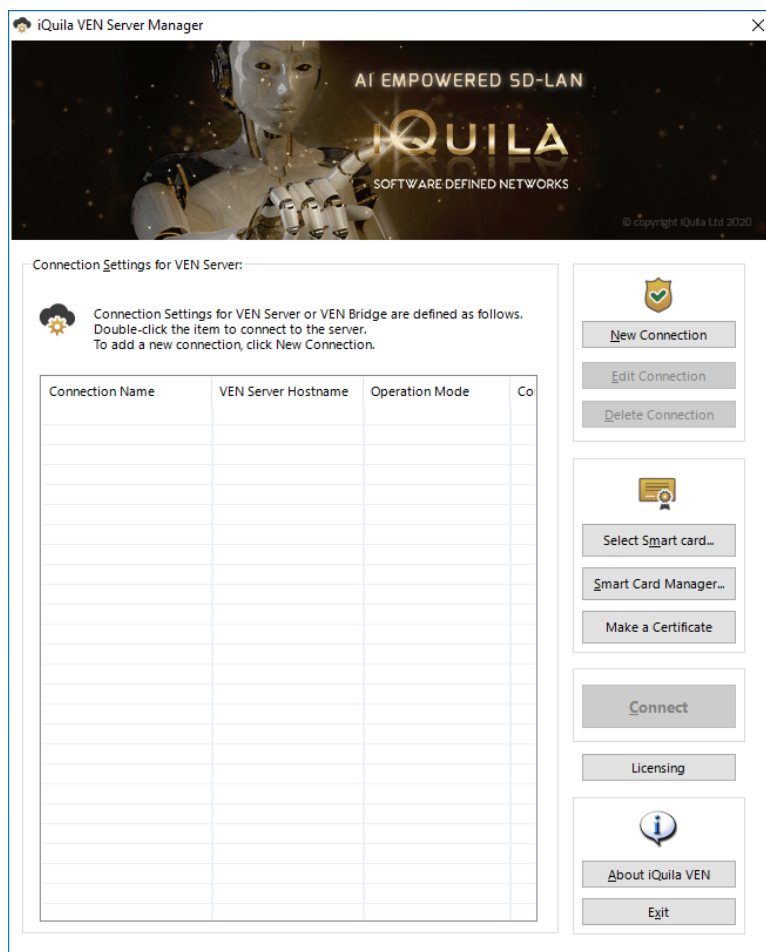
www.iQuila.com

iQuila Enterprise Server Quick Start Guide

1. Install the iQuila Server Manager

The iQuila Server Manager will be provided when you purchase iQuila or can be downloaded from our website under Product Updates, download and install the application, once installed the install will add an Icon to your Start menu and Desktop.

Launch the iQuila Enterprise Manager



Select the option New Connection

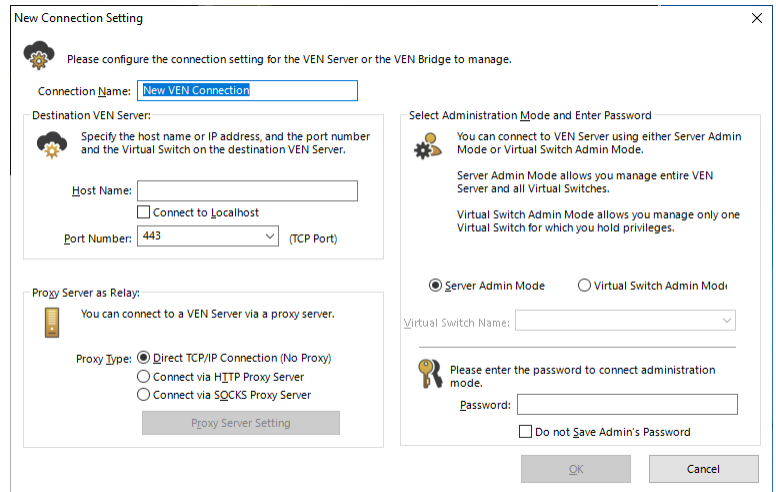
A new connection window will show

Under Connection Name enter you desired name for the iQuila Server

i.e. iQuila Server New York

Under Hostname enter the IP address or hostname of the iQuila Server.

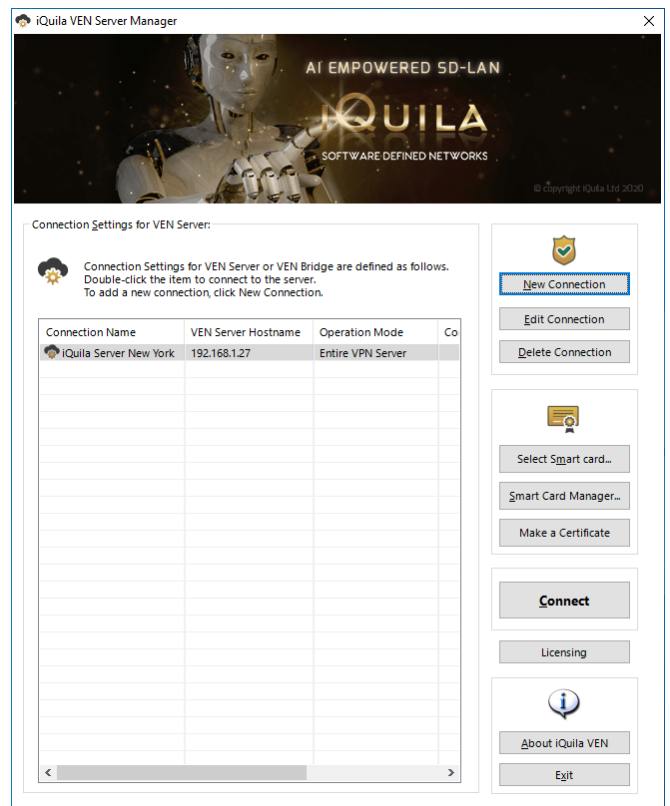
If you have chosen a different port, you can change the port to match under port number.



If you are behind a Proxy server please enter the Relevant Proxy Server details in the Proxy Server configuration section.

If this is the first time you are connecting to your server please leave the Password section blank and click ok, if you are accessing your server that has been Previously configured and has a password set you can enter the password in the password section below.

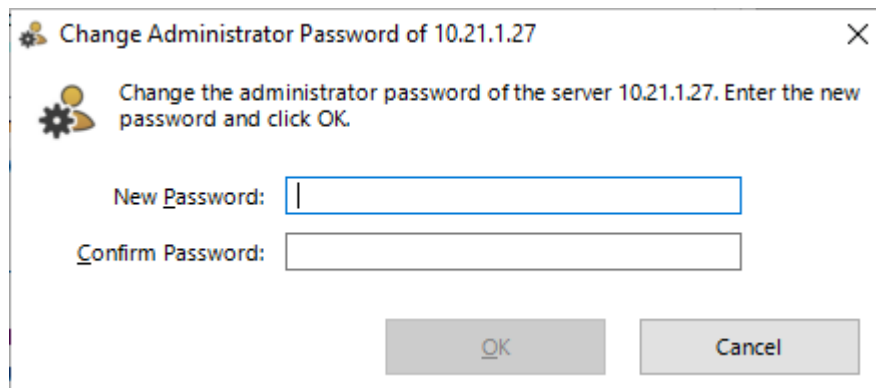
Your entry will now be shown in the List of connections.



2. Licensing

To License your iQuila Server please select the server you just created, or a Previously created server from the connection list of servers listed in the iQuila Manager.

Select the Licensing Button, you will be asked to select your license file, select the license file and click Open, if the license file is valid you will be prompted to create a password for your server.



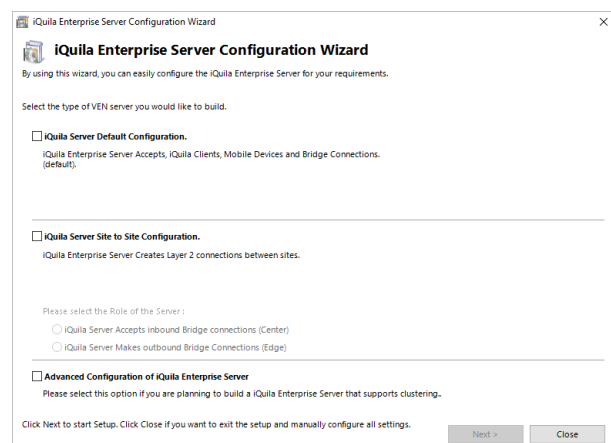
Enter a strong password and select Ok

The Main iQuila interface will load and you will be presented with the Configuration wizard

3. Configuration Wizard

The configuration wizard will display a few options, select the option that best suits you.

- a. iQuila Enterprise Server Accepts, iQuila Clients, Mobile Devices and Bridge Connections. (default)
- b. iQuila Enterprise Server Creates Layer 2 connections between sites.
 1. iQuila Server Accepts inbound Bridge connections.
 2. iQuila Server Makes outbound Bridge Connections
- c. Advanced Configuration of iQuila Enterprise Server.

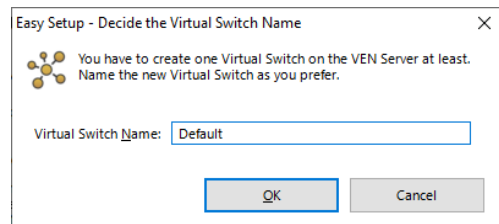


Most configuration will require option 1. However, these settings are for the configuration wizard the configuration can be easily changed at a later date.

Selecting the default first option

In most cases the default options will be selected, once the default option is selected the system will ask you to provide a Name for your first Virtual Switch.

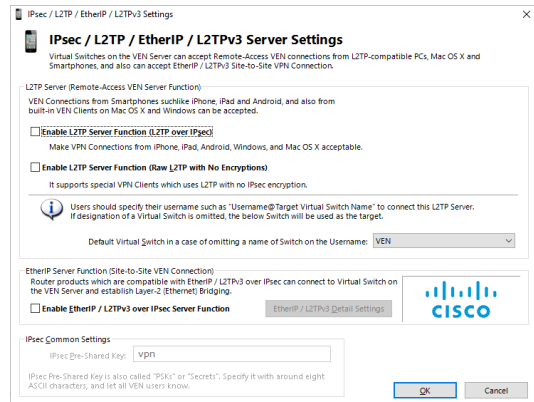
Please enter a name and click OK to continue.



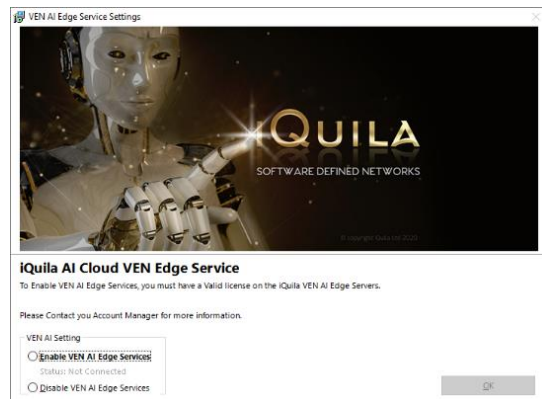
Enabling Legacy protocols

iQuila offers the ability to integrate Legacy protocols such as IPsec, L2TP, EtherIP and L2TPv3

If you require iQuila Enterprise server to accept one of these protocols, select as required.



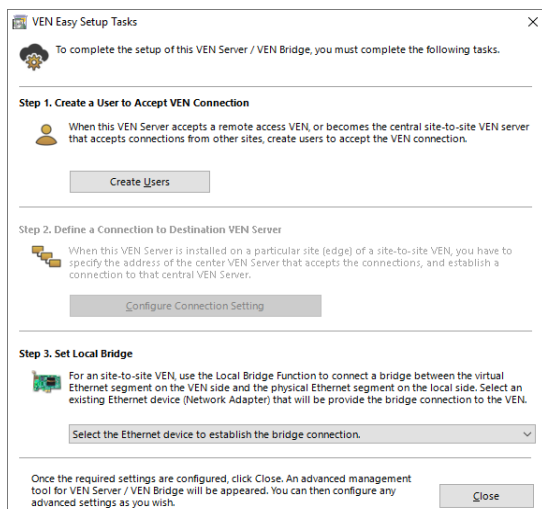
If you have purchased the Advanced AI function you can enable it below, if the option was not purchased with you license please select Disable VEN AI Edge Services.



The Wizard will now show the User and bridge configuration window.

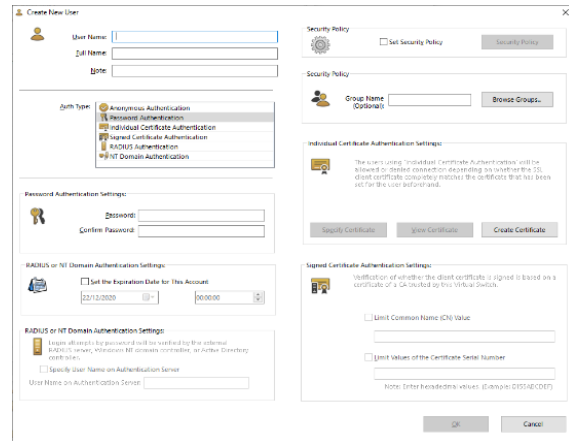
Select the Option Create Users, New user window will be displayed.

(You may skip this section and configure Users later if required.)



Fill out the required users, you are able to add as many users as you license permits.

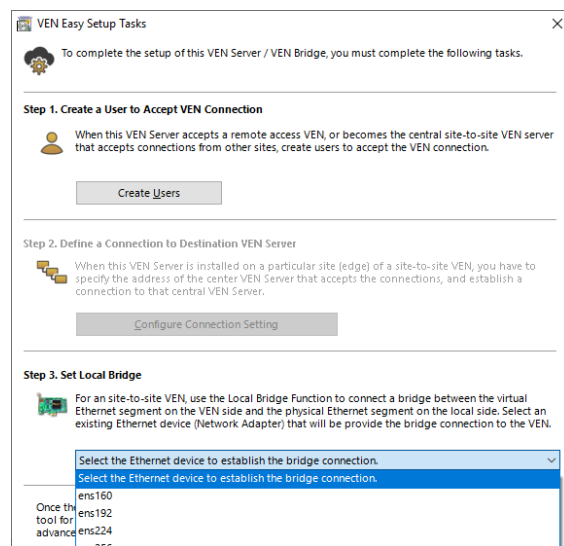
For more information on creating users please refer to the iQuila Enterprise Server Manual v4.35



Bridging with your Network

iQuila operates using full layer2, select the Relevant network adapter you would like to bridge to the Virtual Switch and click Close.

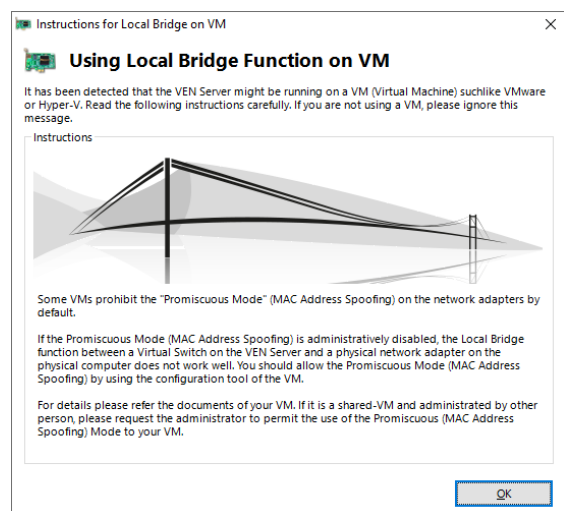
A Bridge will be created between the iQuila Virtual Switch and the Local network adaptor.



if you are using iQuila Virtual Server / Bridge or have installed the iQuila software on a Virtual server the following screen will be displayed.

Please note:

When using iQuila Enterprise Server or Bridge software on a Virtual Environment you will need to configure Promiscuous Mode on your virtual networking to "Accept" for Layer2 frames to be passed.



Once you have completed the Wizard you will be presented with the iQuila main management interface window.

From the main iQuila Management interface you can configure the entire iQuila system for further information please see the iQuila Manual, iQuila Enterprise Manual v4.35.

